

PARK ACTIVITY CORE AREA

EXISTING PICNIC SHELTER: To be either substantially modified or replaced pending further structural evaluation.

PICNIC TABLES: Picnic tables, including ADA accessible tables, intended for general public use (not associated with the tables dedicated to the picnic shelter) will be provided throughout the park.

PARK RESTROOM: New fully ADA accessible restroom will be designed to accommodate two single users and will include an ADA accessible drinking fountain (approx. 11'x19' footprint).

PLAYGROUNDS: Upgraded playgrounds will be designed to retain traditional popular elements where feasible/safe, and will offer a range of play elements suitable for all ages with ADA accessible features and nature play elements incorporated.

ADA ACCESSIBLE PATHWAYS: The ADA accessible pathways depicted on the plan may be revised upon construction depending upon field slopes and contours.

LEGEND

- ADA Path
- Soft Surface Trail
- Street Light
- Catch Basin
- Drainage
- Activity Core Boundary

Upgraded Shelter and Adjacent Area with Improved ADA Accessibility

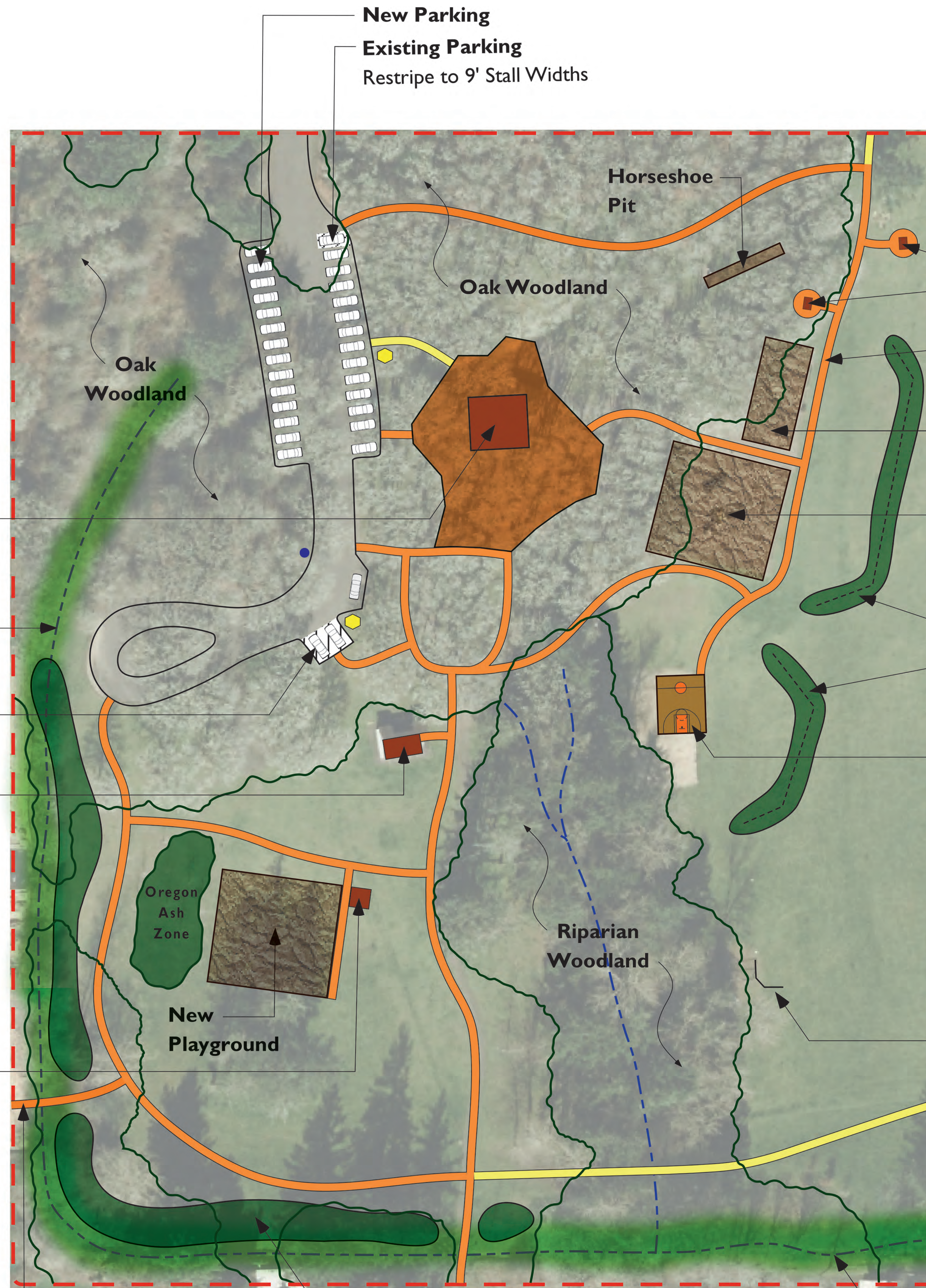
Extend Existing Drainage Ditch and Naturalize as Bioswale

ADA Accessible Parking

New Restrooms



New Shelter



ADA Accessible Picnic Sites

ADA Accessible Path System

Swing Sets

Upgraded Playground with Multi-station ADA Accessible Nature-play Features

Low Fence within Vegetation to Protect Play Areas

Basketball Half Court at Existing Volleyball Site



Existing Backstop

Naturalize Ditch as Bioswale Meander Course and Vegetate with Riparian Native Plants



Approx. Scale:
10' 20' 40'
(orig. size 30"x42")

NOT FOR CONSTRUCTION

March 20, 2017