

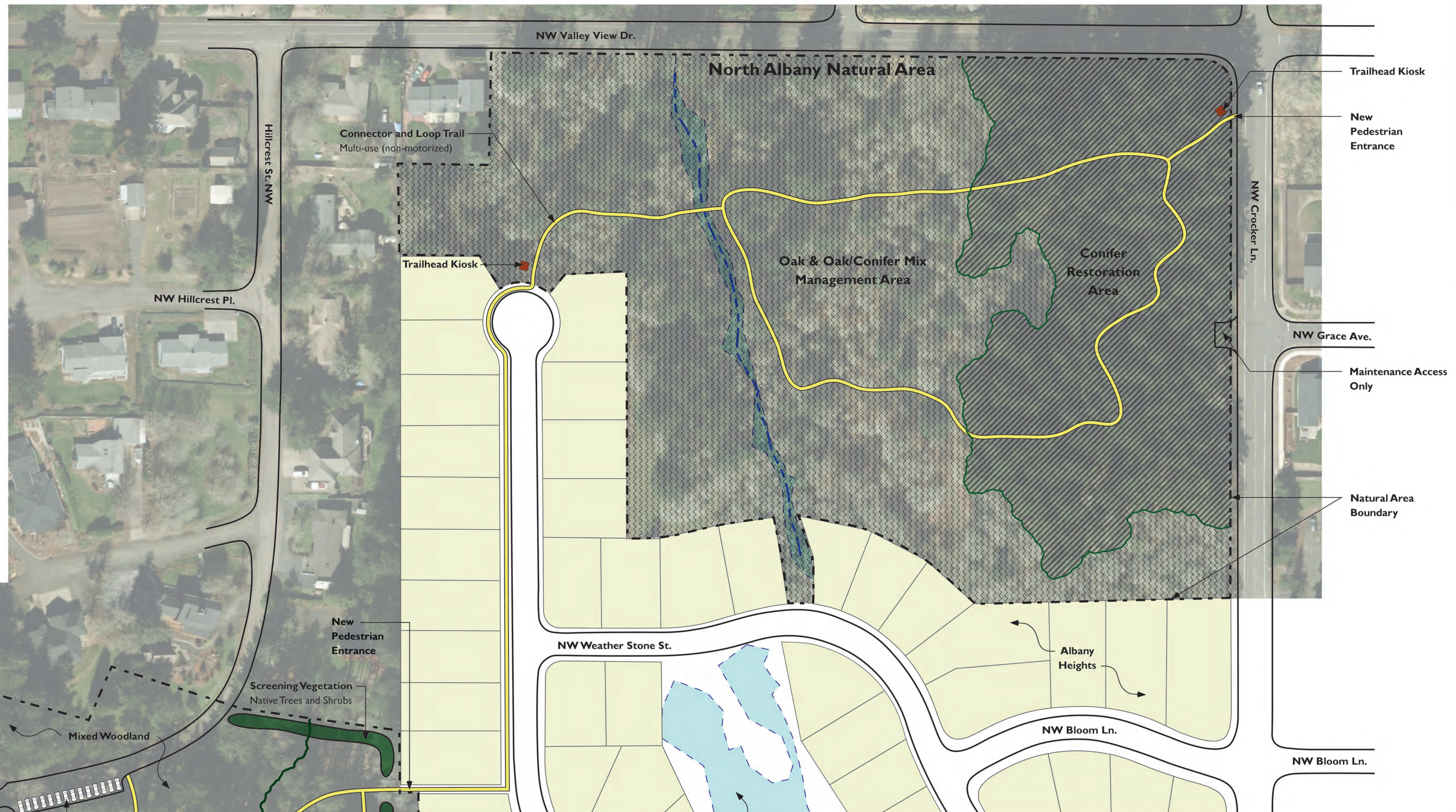
**PARK**

**Principles:**

- Design and plan to assure the highest level of safety and security, including integration of Crime Prevention Through Environmental Design (CPTED) components.
- Incorporate park amenities and design features which promote health and well being.
- Create a trail and path network which connects the established park to the surrounding residential neighborhoods as well as the new Natural Area.
- Replant site appropriate trees and vegetation to provide screening, retain and enhance the natural park character.
- Take actions to manage stormwater runoff and improve riparian area function.

**Detail:**

**Puncheon:** Will be an optional "as-needed" trail alternative dependent upon the success of planned repairs and improvements associated with the existing stormwater system and re-vegetation strategies intended to increase rainwater absorption and decrease downslope runoff.



**NATURAL AREA**

**Principles:**

- Natural Area will be managed to promote physical activity and environmental education opportunities.
- Crime Prevention Through Environmental Design (CPTED) principles relating to landscape and trail design/maintenance will be employed throughout the Natural Area.
- Woodland trees will be monitored and managed on an ongoing basis to promote tree health and provide for public safety.
- Invasive plant species control will be emphasized throughout the area.

**Detail:**

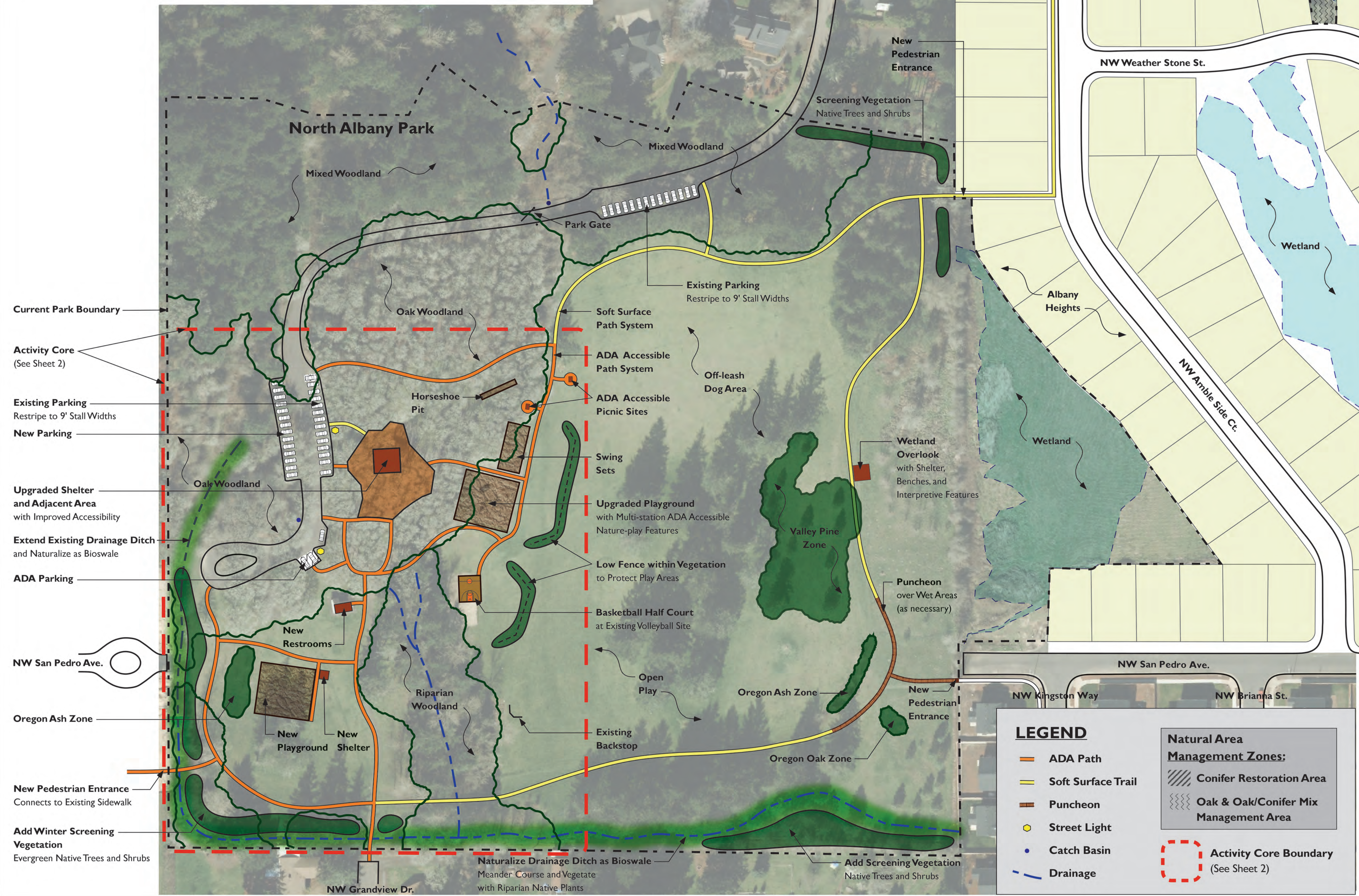
**Conifer Restoration Area (eastern 1/3 of Natural Area):** Replanted with a mixture of coniferous and deciduous tree/shrub species with emphasis on resiliency, wildlife habitat enhancement.

**Oak & Oak/Conifer Mix Management Area:** Vegetation will be managed to enhance the growth and vigor of mature oak trees and associated habitat species, coniferous species in proximity to mature oaks will be removed to reduce competition.

**Pedestrian/Bike Loop Trail:** Soft surface (combination of natural, mulch, gravel surface), 4-5' tread width.

**Trail Head Kiosks:** Posted with informational, regulatory, and interpretive signage.

**Pedestrian/Bike Connection Pathway:** North Albany Park to North Albany Natural Area connectivity provided via connector path and NW Amble Side Ct. sidewalk.



**LEGEND**

- ADA Path
- Soft Surface Trail
- Puncheon
- Street Light
- Catch Basin
- - - Drainage

**Natural Area Management Zones:**

- ▨ Conifer Restoration Area
- ▨ Oak & Oak/Conifer Mix Management Area
- ▭ Activity Core Boundary (See Sheet 2)

